

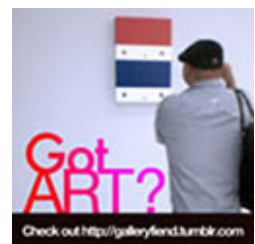


< Previous Next >

Studio Visit with Julia Sinelnikova

USSEA REGIONAL CONFERENCE
AN INCLUSIVE WORLD
BRIDGING COMMUNITIES
July 17 – 19 2015
Queens Museum
Queens, New York
PLEASE CLICK [HERE](#) TO SEE CONFERENCE AGENDA AND REGISTER

AF is looking for writers
email info@artefuse.com



Fairy Organs sculptures in various stages of completion

What is your background in the arts and how did you end up in NYC?

Art has always been a central focus in my life. I began taking painting and sculpture classes in second grade, and my mother, who loves to travel, would take me to a museum in every city we visited. I started my official career in the arts through performing at live poetry readings in Houston, Texas when I was about fifteen, where I met an accepting and diverse community of artists. After exhibiting



throughout
central
Texas for a
couple of
years and
working
one of my
first jobs at
the



Artist Julia Sinelnikova talking about her series *Reveals & Sprites*

Contemporary Art Museum of Houston, I moved to Bushwick, Brooklyn in 2008 to join the thriving local creative community.



Black Fairy Egg Nest

Can you tell us about your process?

My work is cumulative. My focus is on modes of thinking in the digital age, with a touch of the fantastic. I am interested in the fragmentation of thought through contemporary modes of communication, and the objects I create reflect this through their modular nature. Cubes, cells and cuts grow into semi-transparent, reflective structures which are both solid and ethereal, calling into question the materiality of the digital plane through which we interact.

My process is very meditative, as I often utilize repetitive techniques to create the final work over the course of several months. The construction process is a personal performance which allows me to focus scattered energy, so I consider the final product to be separate from the process in a sense. To me, the work is its creation and the reaction of the audience – the actual object is simply the signal.

I often use my photography of transitional shadows in nature as a starting point for creating fractal-inspired patterns. I aim to create a supernatural aesthetic which transports the viewer and stimulates a trance-like dream state.



Black Fairy Nest Egg

What project are you currently working on now and do you have any exhibitions coming up?

My current body of work is entitled "Fairy Organs." I



Part of the Reveals & Sprites series

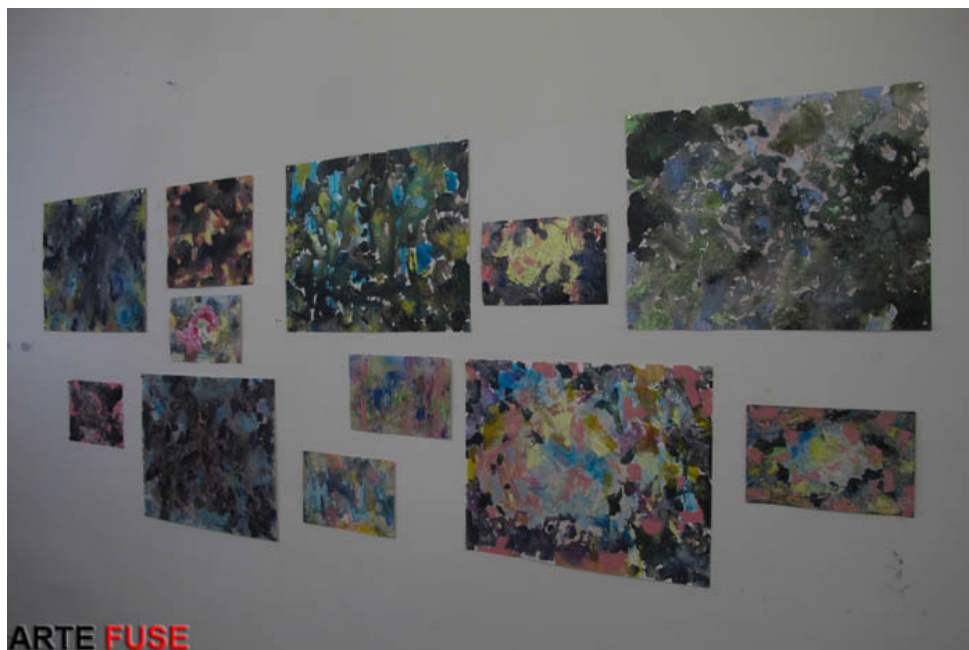
find it fascinating that today one can swap out organs as if they are an accessory. The industrial manufacturing process is being applied to human body parts, such as artificial limbs. Many of my works incorporate hand cut patterns which are based on my nature photography and Mandalas. Yet, the shapes, colors and

glowing lights of the Organs are inspired by supernatural imagery, reminding the viewer of their fabricated nature. Fairies are often thought of as beautiful, magic creatures, but in the myths they are often depicted as mischievous and even manipulative. This association draws further attention to the uncertainty humans face in our increased reliance on the digital and fabricated.

As The Oracle of Vector Gallery, I have been working with owner and Crown Prince of Hell JJ Brine to help develop our new location, which opened August 1st on the Lower East Side. I will display my newest Fairy Organs there at the next opening on **October 3rd**. I am also happy to take part in the Rema Hort Mann Foundation's annual benefit exhibition this **November** in Lower Manhattan. I am looking forward to exhibiting with the Lower East Side's Rox Gallery again for an opening on **November 19th**.

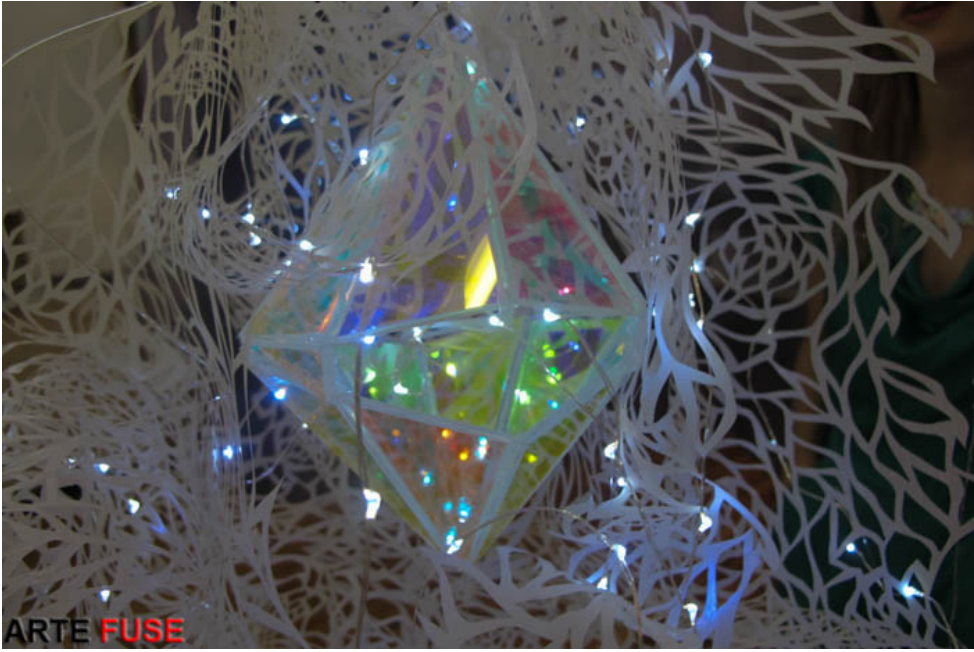
WWW.JULIASINELNIKOVA.COM

Interview and photography by Jamie Martinez





Artist Julia Sinelnikova with her new work





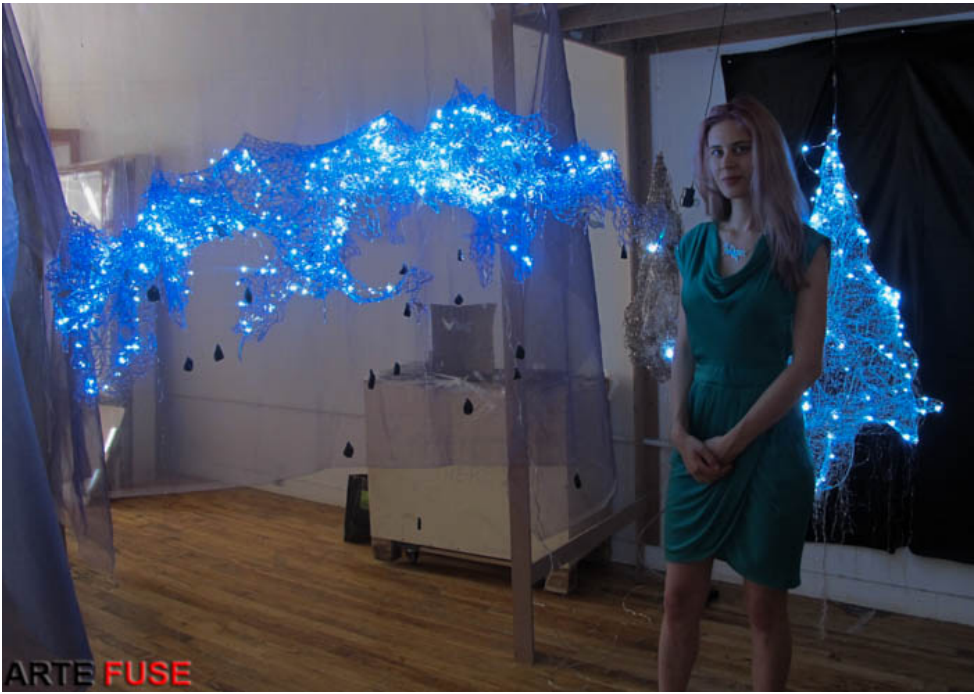
Julia's jewelry pieces are little figments of the sculptural work which she makes a few of every time she pours a large amount of resin. They are hand cut out of various printed and holographic films, and brushed with dichroic pigments. They are available as her OracleWares line.



Julia Sinelnikova's studio in Brooklyn









ARTE FUSE



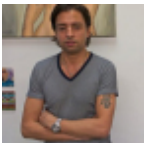
More of Julia's jewelry

By Jamie Martinez | September 5th, 2014 | Interviews, New York, Studio Visits | 0 Comments

Share This Story, Choose
Your Platform!



[title size="2" content_align="left" style_type="default"]About the Author: Jamie Martinez[/title]



Jamie Martinez is the founder and publisher of ARTE FUSE magazine. He is also a contemporary artist through a visual innovation he calls "Triangulism" in which he "cuts" (his own term) images into triangulated segments as a way to express their essential form. Jamie's art has been featured in Artslife, Artribune, Artiholics, Whitehot Magazine, The Examiner, 20minutos España, Nolita Hearts, Escape into Life, The New York Optimist, Blouin ARTINFO, and also collaborated with Diesel for a large installation in Union Square NYC and in Galleries Lafayette in Paris. He has shown in Russia, Spain, Canada, Miami and numerous galleries in New York City. Jamie Martinez is currently with Galerie Protégé in NYC and Zener Schon Contemporary Art in Northern California.

[title size="2" content_align="left" style_type="default"]Leave A Comment[/title]

Name (required)	Email (required)	Website
-----------------	------------------	---------



Comment...

POST COMMENT

BROWSE OUR ARCHIVES

Select Month 

ARTEFUSE NAVIGATION

[Home](#)

[Art Reviews](#)

[Interviews](#)

[Videos](#)

[Contribute](#)

[Open Submissions](#)

[Advertise](#)

[About/Contact/Staff](#)

ARCHIVES

[June 2015](#)

[May 2015](#)

[April 2015](#)

[March 2015](#)

[February 2015](#)

[January 2015](#)

[December 2014](#)



November 2014

October 2014

September 2014

August 2014

July 2014

©2015 ARTEFUSE.COM

